



**Seco sustainable &
versatile solutions made
for your best performance**





Discovering the future of our manufacturing industry

At Seco, we make tools, tech, and solutions for the most advanced manufacturing challenges on Earth. From our founding in Fagersta Sweden, to today's global company, our business has always been made to measure, and built on trust.

Combining cutting-edge, precision tools with lasting, personal partnerships, we're a true people company helping our partners discover the future of the manufacturing industry.

We're proud to make for makers, invent for inventors, and partner with pioneers. Driving the future forward with our focus on innovation. In short - if the right tool for the job exists, we'll deliver it. If it doesn't, we'll create it.

We're proud to put sustainability at the heart of everything we do, challenging perceptions of our industry, changing the process of manufacturing, and playing our own small part in shaping a brighter looking future.

Table of contents

1. Seco Services

- 4 Seco Digital services selection

2. Milling solutions

- 6 Turbo Square shoulder
- 8 Discmill 335.19
- 10 Quattromill face milling
- 12 High Feed SP & LP
- 14 X-head Exchangeable head system
- 16 JSE510 universal solid end mills
- 18 JS550 performance solid end mills

3. Turning solutions

- 20 Duratomic grades
- 22 TP25 universal grade
- 24 MDT Multi Directional Turning and Grooving

4. Threading solutions

- 26 CP500 universal threading grade

5. Holemaking solutions

- 28 Perfomax insert drills
- 30 Universal Drills
- 32 T32-T34 threading taps

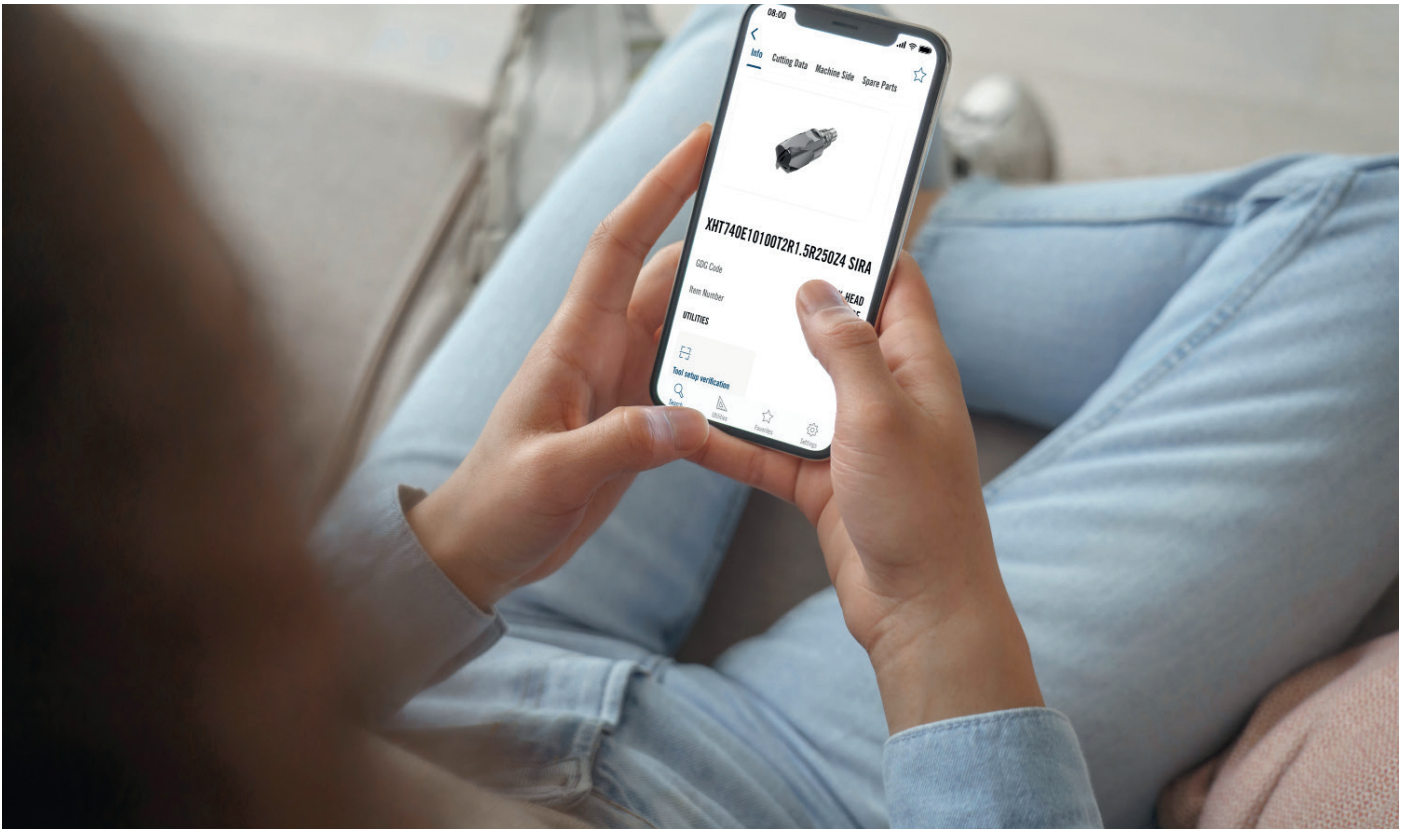
6. Tooling systems

- 34 Steadyline® vibration-damping bars



Make your job easier & faster
with Seco online services

Seco Digital Services



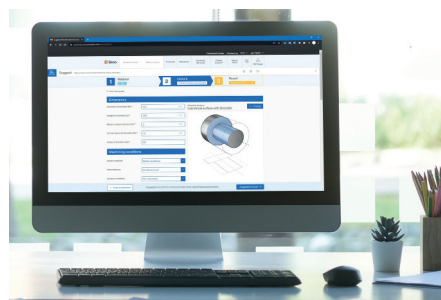
The Seco My Pages environment is a versatile online platform that offers various services, like quick quotations, effortless product searches or tool recommendation.

Product search

Search on the Seco website Home page to find comprehensive results, from tooling, technical articles and videos to press releases, events, news and website pages. The Product Search portlet in your Seco account works similarly to provide you with tooling results. It gives you all the options that respond to your search terms.

Suggest

When you know part material and application but aren't sure of the best tool choices, turn to Seco Suggest. It's ready and waiting to help you any time you need cutting tool advice.



Seco Online Store

Featuring real-time inventory levels for approximately 30,000 products and net prices in local currencies, the Seco Web Store allows users to immediately order the tools they need to maintain efficient and fully optimized part-production operations.



Scan here to learn
more about our
digital services



Make your job easier & faster
with Seco online services

Seco Digital Services

Favorite tools

You're already accustomed to using online "favorites" to identify things you like, from books and movies to apparel and shoes. The Favorite Tools portlet takes that familiar consumer "like" and applies it to Seco tooling.

Orders

Take the tedium out of tool re-orders with the Orders portlet in your Seco account. Once you sign in, you can see every Seco order you've placed – and purchase any item again with a few clicks. You can also track your Seco orders from the moment you make a purchase until the package arrives at your shop.

Material Library

The Seco Standard Material Groups (SMG) and shows you where the parts and tools for your next job fit in. It also helps you learn more about how to cut individual materials and when to use specific tools.

Seco Assistant App

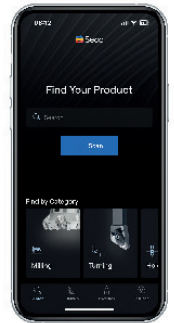
With our mobile Seco Assistant app, you can get feeds and speeds, cutting data, compare products, and more. Essential tooling and cutting data on the go. Machining calculations can be a hassle, especially if you have to look up information on a laptop or search through print catalogs. Seco Assistant, **an all-in-one machining app**, makes it easy to find the information you need without leaving the production floor. Most important features are: tool optimization, machining calculators, product comparison, product scan, Suggest, material categories and tools setup verification.



App Store



Android



Digital Tool Assembly

Visualize tool assemblies accurately in seconds with Seco Digital Tool Assembly. This online machine tool assembler uses production data for instant accuracy. Shorten tool-selection time and find the right tooling fast. From product pages or from tool recommendations on Seco Suggest, quickly create precise machine tool assemblies. Download 2D and 3D drawings and data to perform accurate pre-machining simulations and tool collision checks in CAM systems. Eliminate time-consuming manual assemblies and guesswork for greater productivity.

Discover more sustainable solutions & services

In addition to our online service, we provide much more: from inventory management system solutions, technical training, engineering services to carbide recycling.



Scan here to learn more about our digital services



Versatility and cost efficiency in milling

Turbo range: Square shoulder milling cutters



Your challenge

Rationalize your milling cutter stock.

Our solution

Suitable for most roughing, semi-finishing and finishing operations, these highly versatile cutters offer long tool life and high precision via optimized properties that reduce heat generation and cutting forces.

Your challenge

Optimize your milling operation efficiency.

Our solution

Turbo cutters have precision milled pocket seats that improve run-out, stability and tool life by providing optimal contact between the tool body and insert. Integrated through-coolant channels support high productivity and promote excellent chip evacuation.

Your challenge

Unstable cutting processes affect your productivity and component quality.

Our solution

cutting tool with low cutting forces and smooth cutting action for excellent tool life and a stable, secure process at high material removal rates.

Product designation

Milling cutters: R217/220.69

Inserts: XOEX/XOMX

Product description

2 cutting-edges, single-sided Inserts

The Turbo family takes square shoulder milling to the max. Suitable for most roughing, semi-finishing and finishing operations, these highly versatile cutters offer long tool life and high precision via optimized properties that reduce heat generation and cutting forces.

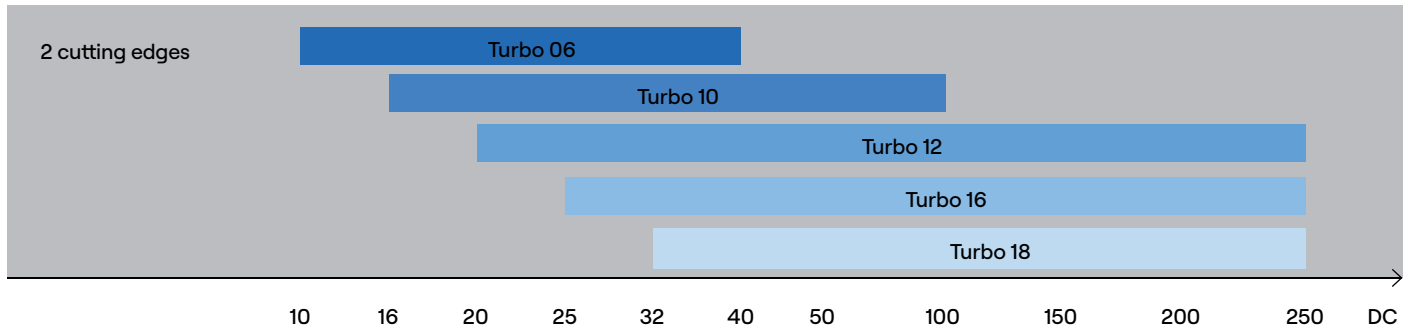


Scan the QR code and find out more information

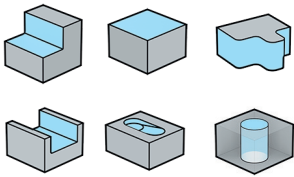


Turbo range: Square shoulder milling cutters

Range overview



Possible applications



Product features

recommended a_p / max a_p :
 3 mm / 5 mm (XO.06),
 6 mm / 9 mm (XO.10),
 7 mm / 11 mm (XO.12),
 9 mm / 15 mm (XO.16)
 10 mm / 17 mm (XO.18)

Mounting type

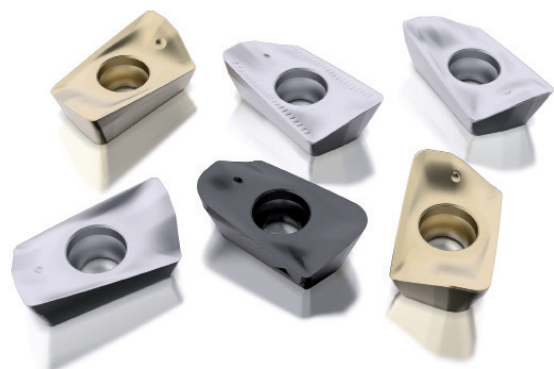
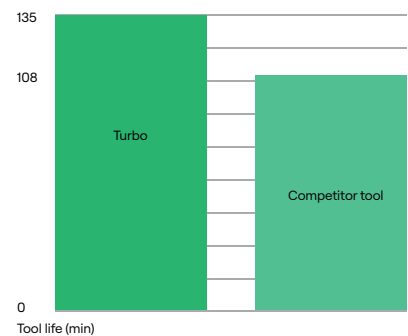
Cylindrical,
 Weldon,
 Seco-Weldon,
 Combimaster,
 Arbor

Insert range overview (only main ones)

Grade	Purpose	Suitable materials
F40M (PVD)	Versatility	P M K S N
MP2501 (CVD)	Dry machining, unstable, versatility in P & M	P M K
T350M (CVD)	Versatility in material P & M	P M S H
MK2050 (PVD)	K material specific	P K H
H15 (Non revêtu)	N material specific	N
MS2500 (CVD)	M and S material specific	P M S
MS2050 (PVD)	M and S material specific and suitable for P	P M S
MP3000 (PVD)	Optimized and suitable for H material	P M K H
MP1501 (CVD)	Dry machining, stable, versatility in P & M	P M K

Product case studies

Application	Contouring
Industry segment	General engineering
Material	40CMD8 - SMG P5
Coolant	No - dry machining
Tools	R220.69-0063-12-6AN XOMX120408TR-M12,MP2501
Customer target	Increase tool life
Cutting data	$V_c = 230$ m/min $f = 0,21$ mm/dent $A_p = 7,5$ mm $A_e = 9$ mm



Scan the QR code and find out more information



Economical and
comprehensive solution
for disc-milling operations

335.19 Disc milling cutter for small to medium width of cut



Your challenge

Difficulty to find the right tool
for your disc-milling application.

Our solution

335.19 range is the broadest range
in the disc-milling cutters system
on the market. With any type of
machine connection, cutter diameter
and insert corner radius choice.

Your challenge

Get a reliable and precise solution to
avoid any production issue.

Our solution

A proven solution for trouble
free operations even in the most
demanding ones. Get reliable chip
formation and evacuation thanks to
the unique and specific design
of the tool.

Your challenge

Optimize your production costs for
disc-milling operations.

Our solution

The range offers 4 cutting edges
per insert and a very precise insert
solution to avoid any extra finishing
operation.

Product designation

Milling cutters : R335.19
Inserts : 335.19 & SNHQ

Product description

The 335.19 disc milling cutter range is an economical, precise and free-cutting solution for small width of cut with 4 cutting edges per insert.

- Width of cut 4-12 mm
- Cutter range diameter 40-250 mm
- Insert corner radii range 0.2-6 mm



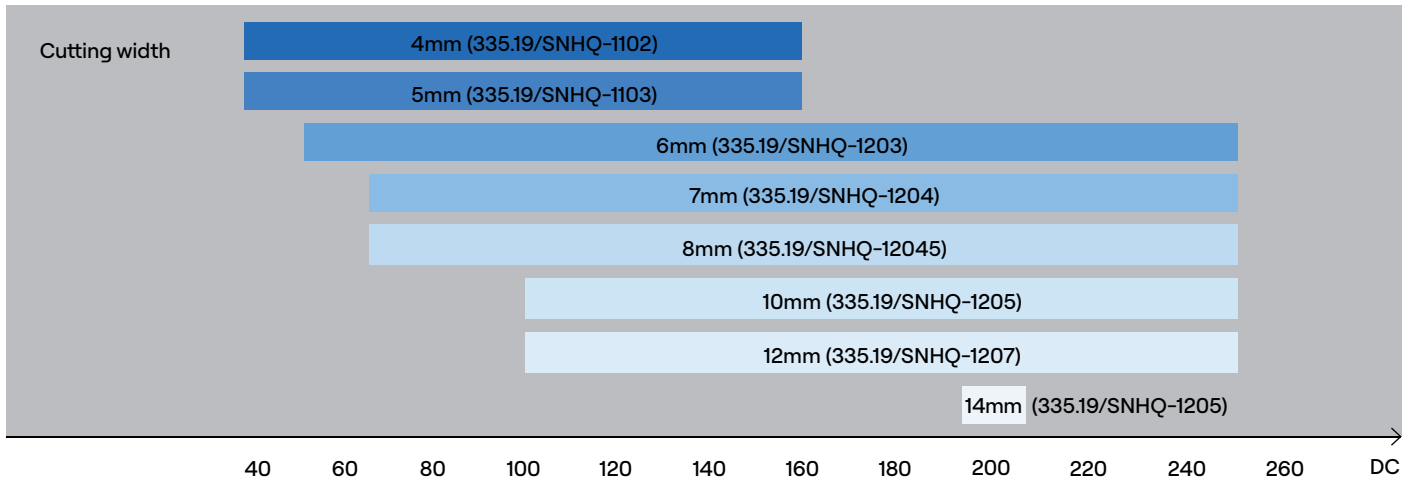
Scan the QR code
and find out more
information



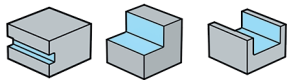
Economical and comprehensive solution for disc-milling operations

335.19 Disc milling cutter for small to medium width of cut

Range overview



Possible applications



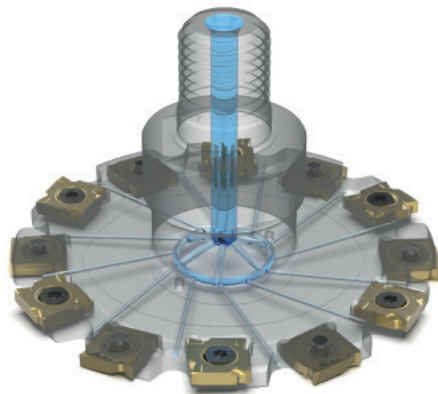
Mounting type
Cylindrical,
Combimaster,
Arbor

Insert range overview (only main ones)

Grade	Purpose	Suitable materials
F40M (PVD)	Versatility	P M K S N
F30M (PVD)	Optimized and suitable for P and H material	P M K H
MS2050 (PVD)	M and S material specific and suitable for P	P M S
MP2501 (CVD)	Dry machining, unstable, versatility in P & M	P M K
MM4500 (CVD)	Optimized for M material	P M S
H25 (Non revêtu)	N material specific	N

Product case studies

Application	Side milling and slotting	
Industry segment	General engineering	
Material	42 Cr Mo 4 - SMG P5	
	Previous solution	Seco solution 335.19
Coolant	External coolant	Internal coolant
Tools	2 different disc cutter : dia 100 for slotting & dia. 125 for side milling SN.12 style insert	Only one tool for both operations : R335.19-20125, RE-05.8A SNHQ110304TR/L4-M07 F40M
Customer target	Increase tool life	Increase productivity and reduce cycle time
Cutting data	Vc = 220 m/min fz = 0,047 mm/tooth	
Machining time	4min	2min



Scan the QR code and find out more information



Improve your surface finishing quality for face milling applications

Quattromill – Face milling cutters



Your challenge

Ensure a constant and good quality surface finishing in face milling operations.

Our solution

Due to their cutter geometries and positive cutting rake design the Quattromill face mills excel in surface finishing operations.

Your challenge

Get an reliable, productive and with low energy consumption solution.

Our solution

Quattromill cutters positive cutting rakes maximize a machine tool's capability and enables increased productivity in both stable and unstable conditions.

Your challenge

Get the best from your machine and reduce cycle times.

Our solution

The Quattromill face milling cutter is designed in a close-pitch version. A special patented center-locking insert screw design, the new face mill puts more teeth/inserts in the cut for higher feed rates, improved surface finishes and increased productivity.

Product designation

Milling cutters : R217/220.53

Inserts : SEEX09/12/15

Product description

QuattroMill™ is more than a general-purpose face mill.

It is a simple solution with more teeth per cutter that increases productivity, ease of use, reliability and precision for the full range of face milling applications and materials.

QuattroMill is available in a wide range of grades and geometries to cover all operations. It can be configured in three different pitches: coarse, normal and close, and is offered in diameters ranging from 63 to 200 mm.

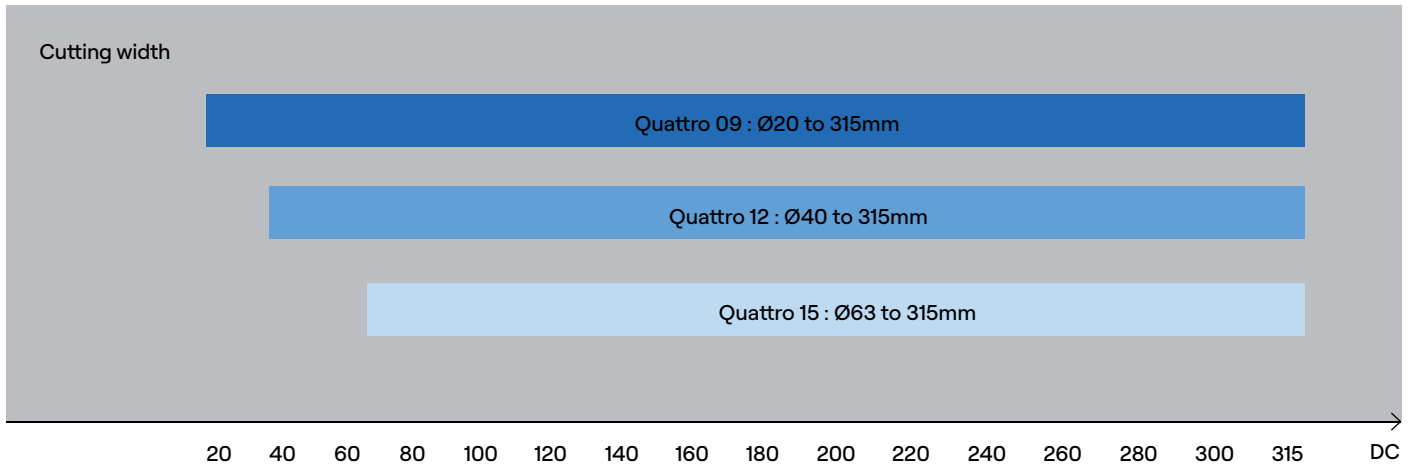


Scan the QR code and find out more information

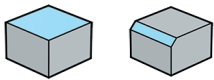


Improve your surface finishing quality for face milling applications

Quattromill – Face milling cutters



Possible applications



Product features

recommended a_p :
 3 mm (SEEX/SEM09),
 4,5 mm (SEEX/SEM12) &
 6 mm (SEEX/SEM15)

Mounting type

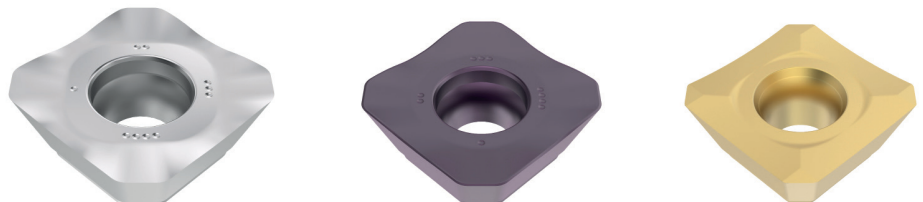
Seco Weldon,
 Capto,
 Arbor

Insert range overview (only main ones)

Grade	Purpose	Suitable materials
H25 (Non revêtu)	N material specific	N
F40M (PVD)	Versatility	P M K S N
MP2050 (PVD)	Secured choice for unstable M and S material	P M S
MP3501 (CVD)	Dry machining, unstable, versatility in P & M	P M S
MP2501 (CVD)	Dry machining, unstable, versatility in P & M	P M K
MP1501 (CVD)	Dry machining, stable, versatility in P & M	P M K
MK1500 (CVD)	Optimized for K material	P K
MP3000 (PVD)	Optimized for stable machining	P M H

Product case studies

Application	Face milling
Industry segment	General engineering
Material	CoCr28Mo6 - SMG S2
Coolant	Yes
Tools	R220.53-0063-12-5A SEEX1204AFN-M10, MS2050
Customer target	Better surface finish
Cutting data	$V_c = 49,5\text{m/min}$ $f_z = 0,40\text{mm/tooth}$ $a_p = 0,2\text{mm}$ $a_e = 50\text{mm}$
Tool life	30min



Scan the QR code
 and find out more
 information



Mill to the max with Seco
High Feed range

High Feed milling cutters



Your challenge

Milling challenging materials like tough steels, stainless steels, superalloys and titanium cause buildup or notched edges and broken inserts that increase tooling costs and cause unexpected downtime.

Our solution

The High Feed SP easily cuts ISO P, M and S materials to increase material removal rates and extend tool life.

Your challenge

Reduce cycle times and increase your productivity.

Our solution

The design of the insert allows to optimize the teeth number per cutter for the LP high feed range.

Your challenge

Optimized milling performance requires switching among numerous tools to implement various machining strategies and part materials.

Our solution

One High Feed SP tool handles a complete range of high feed milling operations and materials.

Product designation

Milling cutters: R217/220.21...SP and R217/220.21 ... LP
Inserts: SPKT10, 14 & 18 and LPKT/LPKW/LPHT/LPHW05, 06 & 09

Product description

SP range:

To make High Feed SP milling cutters the best-in-class four-sided milling solution, their fine-tuned approach to cutting optimizes performance in everything from free-cutting austenitic stainless steels to cobalt and nickel-based superalloys.

LP range:

Using a single sided rectangular insert is the key of the HF2 outstanding performance.

The reduced width of the inserts allows very close pitch design resulting in high metal removal rate while offering high reliability even in deep cavities.

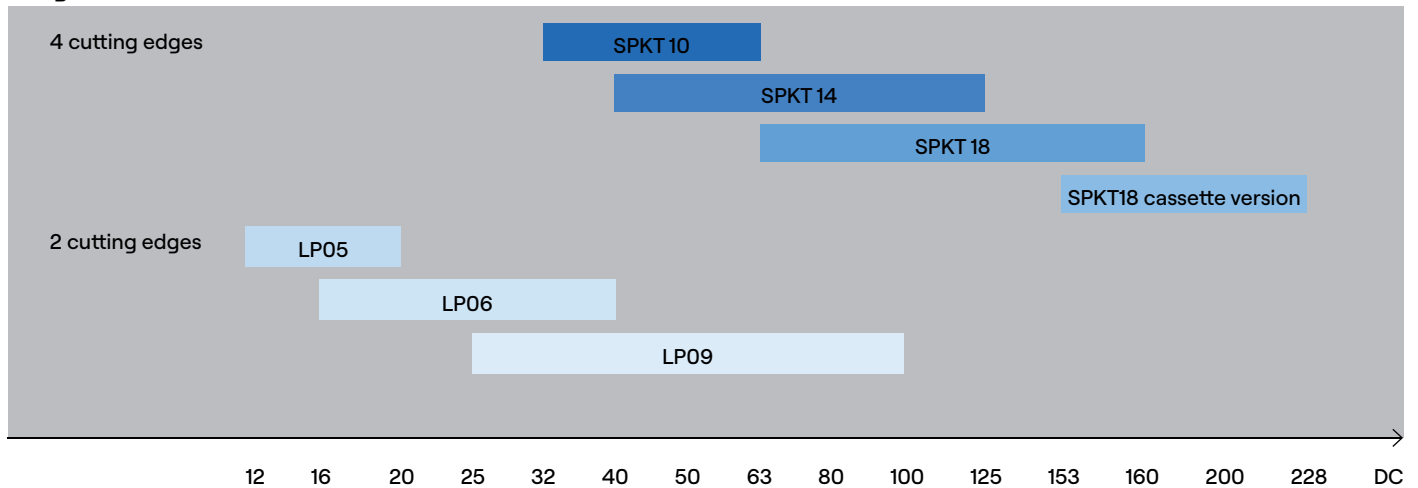


Scan the QR code
and find out more
information

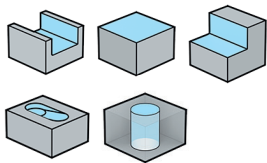


High Feed milling cutters

Range overview



Possible applications



Product features

max a_p :
 SPKT 10: 1,1mm
 SPKT 14: 1,8mm
 SPKT 18: 2,5mm
 SPKT 18 cassette version:
 2,9 & 4,1mm
 LP05: 0,65mm
 LP06: 0,8mm
 LP09: 1,8mm

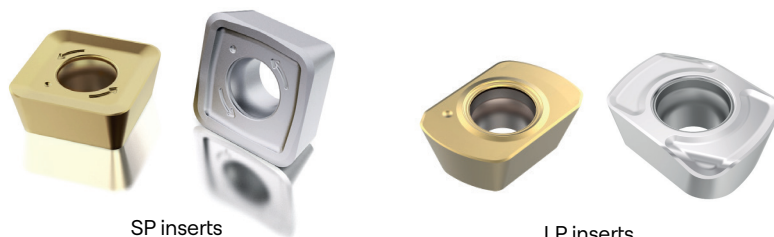
Mounting type
 Combimaster
 Arbor

Insert range overview (only main ones)

Grade	Purpose	Suitable materials
F40M (PVD)	Versatility	P M K S N
MP2050 (PVD)	Secured choice for unstable M and S material	P M S
MP3501 (CVD)	Dry machining, unstable, versatility in P & M	P M S
MP2501 (CVD)	Dry machining, unstable, versatility in P & M	P M K
MP1501 (CVD)	Dry machining, stable, versatility in P & M	P M K
MK2050 (PVD)	Optimized for K material	P K
MP3000 (PVD)	Optimized for stable machining	P M H
MS2500 (CVD)	M and S material specific and suitable for P in unstable conditions	P M S
MS2050 (PVD)	M and S material specific and suitable for P with stable conditions	P M S

Product case studies

Application	Copy milling	
Material	Casted 10/18 stainless - SMG M3	
	Test tool Seco	Comparison tool Competitor
Holder/Taper	DIN50	DIN50
Cutter body	R220.21-0080-SP14.7A Zn=7	Dia 80 mm, spigot size 32 mm Zn=8
Insert	SPKT140523TN-M14, MS2050	Square insert with curved edge, 4 cutting edges
vc	160 m/min	160 m/min
n	630 rpm	630 rpm
fz	0.68 mm/teeth	0.6 mm/teeth
vf	3000 mm/min	3000 mm/min
ap	1.6 mm	1 mm
ae	48 / 25 / 70 mm	48 / 25 / 40 mm
Coolant	On	On
Q	230 / 120 / 336 cm ³ /min	144 / 75 / 120 cm ³ /min
T	23 min	33 min
QTY	1 pcs	0,33 pcs



SP inserts

LP inserts



Scan the QR code and find out more information



Maximize milling versatility
with exchangeable end mills

Seco X-Head Exchangeable End Mill System



Your challenge

Need to purchase many different end mills and holders to machine different features on a workpiece which adds higher cost to a project.

Our solution

Quick-change exchangeable milling head system adapts to various machining needs with a range of cutting profiles and materials without additional holders.

Your challenge

Tool changes require time consuming remeasuring and resetting of tool heights.

Our solution

Quick-change milling heads or modular end mills eliminate the need to remove, remeasure and reset tools.

Your challenge

Deep part features require an inventory of various expensive longreach holders or tools.

Our solution

Broad range of quick-change end mills that are adaptable to longreach shanks.

Product designation

Milling shanks: XE10 / XE12 / XE16 / XE20 and XE25

Product description

With the Seco exchangeable head milling system, quickly and easily change between various solid carbide milling head profiles and types to optimize all your milling operations while you reduce manufacturing costs and tooling inventories. X-Head end mills mount to a variety of available shank lengths for even greater versatility, with long-reach capability.

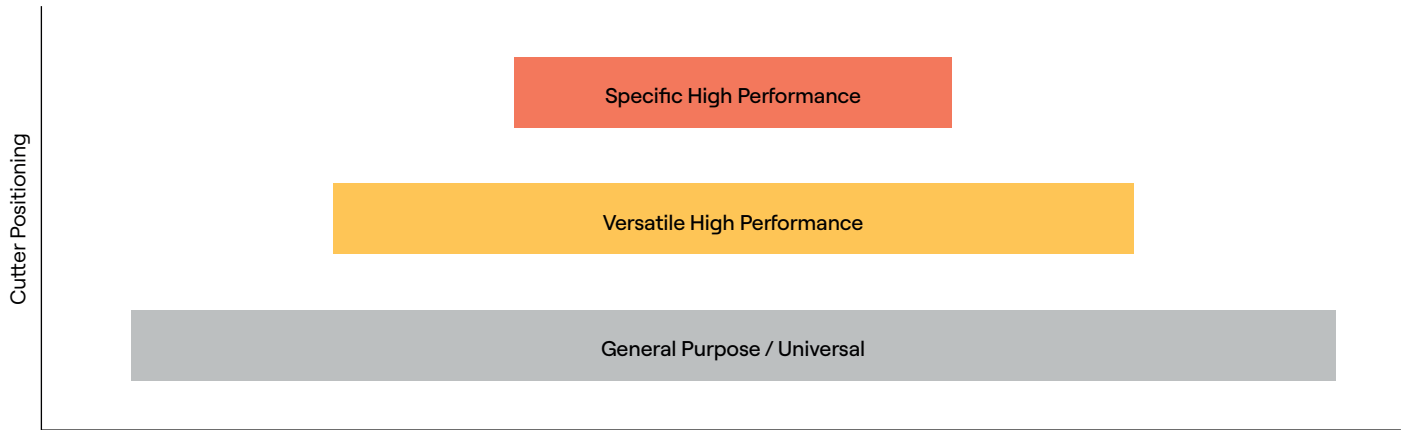


Scan the QR code
and find out more
information



Maximize milling versatility
with exchangeable end mills

Seco X-Head Exchangeable End Mill System

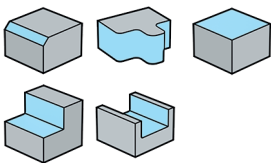


Seco High Performance	
XSE720 (HXT)	Performance multi-flute
XSB720 (HXT)	Performance ballnose multi-flute
XHF780 (HXT)	Performance HighFeed
XHF580 (HXT)	Performance HighFeed + ICC
XSE450 (AXT)	Performance Alu dedicated 3 flute
XHT740 (SIRA)	Barrel tools for finishing

Versatile High Performance	
XSE550 (SIRA)	Performance 3 Flute
XSE550 (SIRA)	Performance 4 flute
XSE550 (SIRA)	Performance 5 flute
XSB540 (SIRA)	Performance 4 flute ball with ICC

Seco Versatile	
XVC512	Chamfer SIG30
XVC506	Chamfer SIG60
XVC509	Chamfer SIG90
XVK310	Concave
XVE540	Basic 3 & 4 flute
XVE510	Basic 2 flute (spade)
XVB510	Basic Ball

Possible applications



Material range overview

Purpose	Suitable materials
Versatility	P M K N S H
Versatile high performance	P M K N S H
High performance (except XSE450 dedicated for N material)	P M K N S H

Product case studies

Objective	Machining cycle improvement
Segment	General engineering
Material	XC45 - SMG P4
Operation	Advance roughing
Coolant	External emulsion
New proposal	
Tool	XSE720E16160D3R200Z6 HXT + XE16200G1-070-00.0S
Vc	250 m/min
fz	0,18 mm/tooth
DoC	22,5 mm
Ae	1,92 mm (12% of dia.)
Q	230 cm ³ /min
Tool life	210 min



Scan the QR code
and find out more
information



Milling stability with solid end mills built for reliable performance

Seco JSE510 cost-effective series



Your challenge

High production costs caused by greater material and application diversity are impacting your profitability.

Our solution

Achieve the lowest cost per meter in steels, stainless steels, cast iron, titanium and some aluminums with a single, well optimized family of solid end mills.

Your challenge

Insufficient machine or process stability causes poor tool life and inconsistent workpiece quality.

Our solution

Increase milling security and tool life with Seco JSE510 solid end mills' irregular tooth pitch, progressive helix and optimized flute configurations.

Product designation

JSE512: 2 teeth

JSE513: 3 teeth

JSE514: 4 teeth

JSB512: Ball nose

Product description

Designed to offer exceptional value with the lowest cost per meter machined in its class, these tools offer versatile, variable pitch geometries matched by a substrate and coating combination that offers good performance in all milling applications and across all steels, stainless steels, cast iron, titanium and some aluminums.

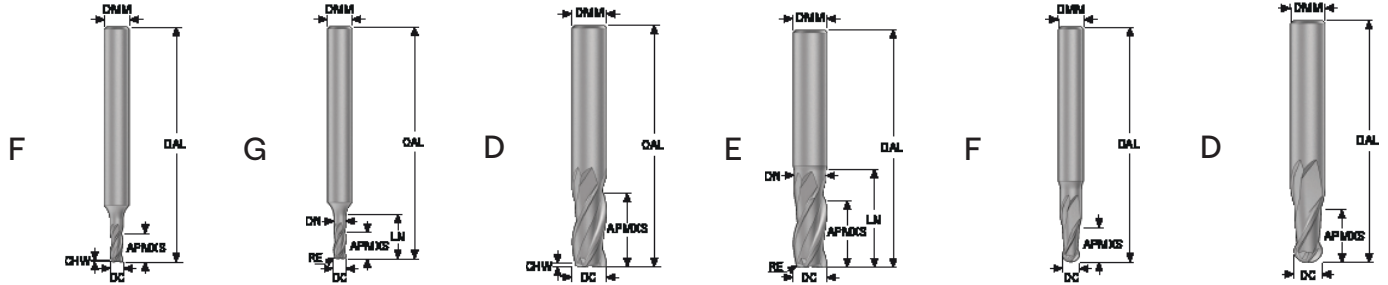


Scan the QR code and find out more information



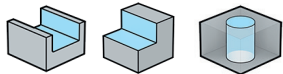
Milling stability with solid end mills built for reliable performance

Seco JSE510 cost-effective series



Family name	Length index	Tool shape	DC (mm)	DMM (mm)	APMXS (mm)	LN (mm)	OAL (mm)	CHW (mm)	RE (mm)	PCEDC	Shank type	Number of items
JSE512	2	F, D	Ø2 - Ø12	Ø3 - Ø12	≈2,0xDC	-	50 - 83	0,01xDC	-	2	Cylindrical, Weldon	18
	2	F, G, D, E	Ø2 - Ø20	Ø3 - Ø20	≈2,0xDC	3,0xDC	50 - 104	0,01xDC	0,5 - 1,0	3	Cylindrical, Weldon	64
JSE513	3	F, D	Ø3 - Ø20	Ø6 - Ø20	≈3,5xDC	-	57 - 125	0,01xDC	-	3	Cylindrical, Weldon	18
	4	F, D	Ø3 - Ø20	Ø6 - Ø20	≈5,0xDC	-	57 - 170	0,01xDC	-	3	Cylindrical, Weldon	18
JSE514	2	F, G, D, E	Ø2 - Ø25	Ø3 - Ø25	≈2,0xDC	3,0xDC	50 - 125	0,01xDC	0,5 - 1,0	4	Cylindrical, Weldon	62
	3	F, D	Ø3 - Ø20	Ø6 - Ø20	≈3,5xDC	-	57 - 125	0,01xDC	-	4	Cylindrical, Weldon	18
	4	F, D	Ø3-Ø20	Ø6-Ø20	≈5,0xDC	-	57-170	0,01*DC	-	4	Cylindrical, Weldon	18
JSE514 Inch	2	D	Ø1/4"-Ø3/4"	Ø1/4"-Ø3/4"	≈1,25*DC	-	2"-3"	-	0.03"-0.06"	4	Cylindrical	13
	3	D	Ø1/8"-Ø3/4"	Ø1/8"-Ø3/4"	≈2,0*DC	-	1 1/2"-4"	-	0.015"-0.06"	4	Cylindrical	17
	4	D	Ø1/8"-Ø3/4"	Ø1/8"-Ø3/4"	≈3,3*DC	-	1 1/2"-5"	-	0.015"-0.06"	4	Cylindrical	17
JSB512	2	F, D	Ø2 - Ø12	Ø3 - Ø12	≈1,5xDC	-	40 - 83	-	0,5*DC	2	Cylindrical	8

Possible applications



Material range overview



Product case studies

Objective	Outperform performance of existing solution
Part name	Roughing external slots
Material	20MnCr5 - SMG P3
Operation	Circumference slots machining
Coolant	Emulsion 40 Bar
Pocket depth	14 (max)
Criteria for tool change	Tool life end / chipping
Machine type	Multi machine (horizontal)
Tool	JSE514080D2C.0Z4-SIRA

Cutting data
 Vc = 110m/min
 N = 4400 1/min
 fz = 0,025mm/tooth
 ap / ae = 14 / 3
 Tool life = 450 pcs



Scan the QR code and find out more information



Versatility and performance
for any application and
material

JS550 high performance end mills



Your challenge

Get high productivity with great price positioning for any of your milling application.

Our solution

The JS550 range offers a full combination of shank, diameters and corner radius.

Your challenge

Reduce your stock inventory with a versatile tool for all your applications.

Our solution

The JS550 solid end mill range works in any material and for a large variety of applications and can be easily switch from one to another with a great level of performance.

Product designation

JS553: 3 teeth

JS554: 4 teeth

Product description

The Seco JS550 high-performance solid carbide end mills offer an optimal material removal rates and also the versatility to handle a wide range of applications and materials.



Scan the QR code
and find out more
information

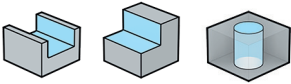


Versatility and performance
for any application and
material

JS550 high performance end mills

Family name	Length index	Tool shape	DC (mm)	DMM (mm)	APMXS (mm)	LN (mm)	OAL (mm)	CHW (mm)	RE (mm)	PCEDC	Shank type	Number of items
JS553	1	D,F	Ø2-Ø12	Ø6-Ø12	≈1,2xDC	-	40-65	0,01xDC	0,2-1	3	Cylindrical, weldon	36
	2	D,F,G	Ø2-Ø25	Ø6-Ø25	≈2,2xDC	≈3xDC	50-125	0,01xDC	0,5-3,1	3	Cylindrical, weldon	116
	3	D,F	Ø2-Ø25	Ø6-Ø25	≈3,2xDC	-	50-150	0,01xDC	-	3	Cylindrical, weldon	22
JS554	1	D,F	Ø3-Ø16	Ø6-Ø16	≈1,2xDC	-	40-75	0,01xDC	0,2-1	4	Cylindrical, weldon	33
	2	D,E,F,G	Ø3-Ø25	Ø6-Ø25	≈2,2xDC	≈3xDC	50-125	0,01xDC	0,15-6	4	Cylindrical, weldon	134
	3	D,F	Ø3-Ø25	Ø6-Ø25	≈3,2xDC	-	55-150	0,01xDC	-	4	Cylindrical, weldon	34

Possible applications



Material range overview



Product case studies

Objective	Cost reduction	
Material	Fe 360 - SMG P2	
Operation	Mainly contouring	
Coolant	External emulsion	
Criteria for tool change	Flank wear	
	Competitor in place	Seco proposal
Tool	Ø8 with 3 effective teeth	553080Z3.0-SIRON-A
Vc	200 m/min	175 m/min
fz	0,03 mm/tooth	0,04 mm/tooth
DoC	9 mm	9 mm
ae	2 mm	2 mm
Q	13 cm ³ /min	15 cm ³ /min
Tool life	125 min	200 min



Scan the QR code
and find out more
information



Achieve the best tool life
for your turning operations

Duratomic® General Turning Inserts



Your challenge

Increase your productivity, reduce waste and get consistent part quality.

Our solution

The improved mechanical properties, as well as the thermal and chemical inertness of the inserts, are achieved with the superior Duratomic coating that utilizes precisely arranged aluminum and oxygen atoms.

Your challenge

Stop wasting unused edges thanks to used-edge detection.

Our solution

Give every insert the long life it deserves with Duratomic® Used-Edge Detection technology, which makes wear visible to the naked eye without impacting turning performance to eliminate waste and reduce tooling costs.

Your challenge

Better productivity with reduced cycle times.

Our solution

Duratomic allows you to raise your cutting speeds thanks to new coating and its heat resistance.

Product description

Duratomic® CVD aluminum-oxide is an exclusive insert coating technology that brings an exceptional combination of wear resistance and edge toughness to a wide variety of Seco grades.

By controlling the atomic structure of its coatings, Seco can ensure the best part of the structure is engaged in the cut. Such control also yields a smoother surface, resulting in less friction and heat during the cut for unmatched tool life and speed capabilities.



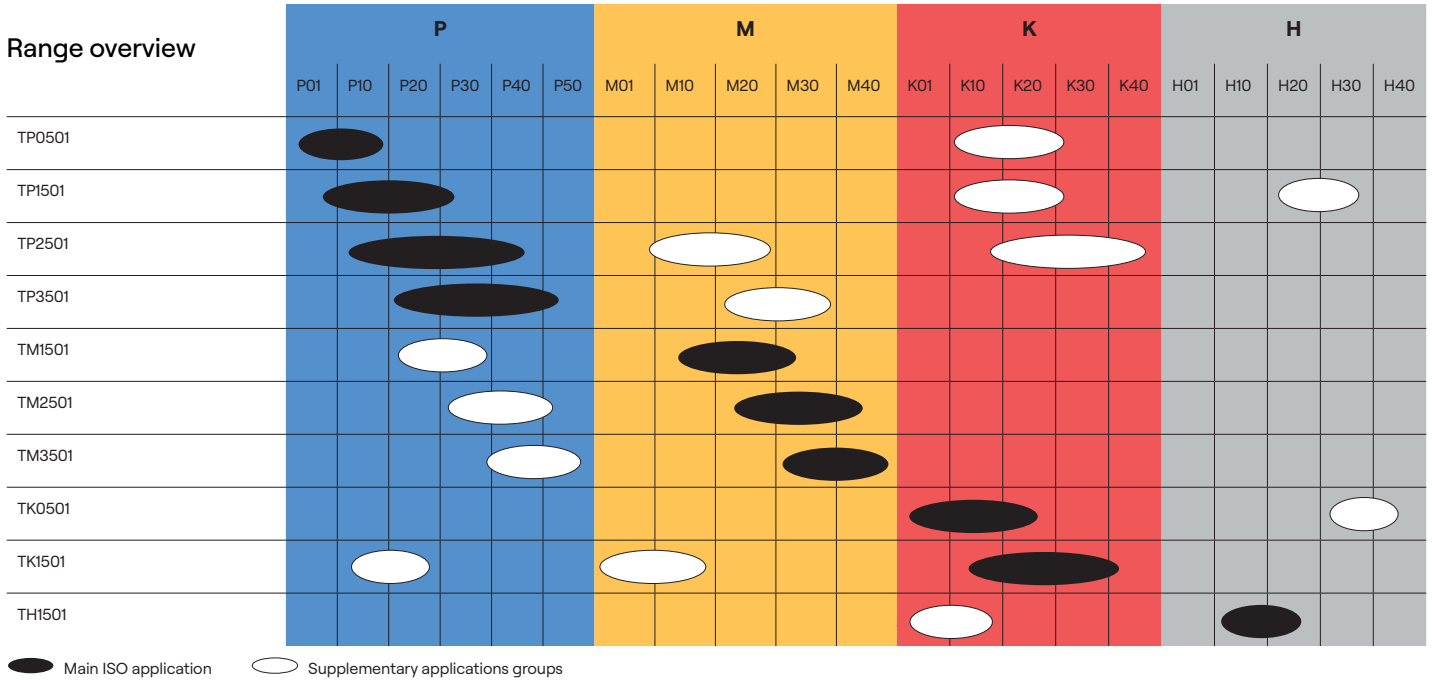
Scan the QR code
and find out more
information



Achieve the best tool life for your turning operations

Duratomic® General Turning Inserts

Range overview

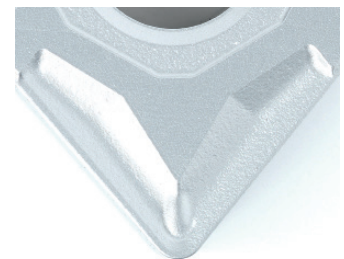
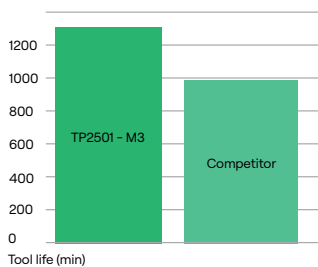


Insert range overview (only main ones)

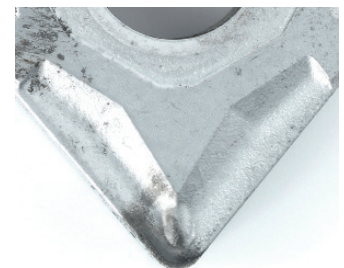
Grade	Purpose	Suitable materials
TP0501	High heat profile for P material	P K H
TP1501	Balance between performance and productivity	P M K
TP2501	Versatility	P M K
TP3501	Secure choice	P M K
TM1501	Productivity for continuous cut operations	M P S
TM2501	Versatility for M materials	M P S
TM3501	For difficult stainless steels	M P S
TK0501	First choice in grey cast iron material	K P H
TK1501	First choice in grey cast iron material	K P H
TH1501	First choice for H material	H P K

Product case studies

Workpiece material	14 Ni 6	
Material	SMG P3	
Cutting mode	Internal interrupted cut	
Coolant	Emulsion	
Grade	TP2501	Competitor
Insert	WNMG060408-M3 TP2501	WNMG060408
Vc	150 m/min	120 m/min
f	0.25 mm/rev	0.25 mm/rev
APMX	1.5 mm	1.5 mm
Tool life	1200 parts	1000 parts



New edge



Used edge detection:
10 seconds in cut



Scan the QR code and find out more information



Stop changing out
inserts for every job and
reduce downtime

Turning Grade TP25



Your challenge

Hidden tooling costs due to wasted/
unused insert edges.

Our solution

Reduce insert waste by 10-20%
and avoid edge waste and reuse
with chrome-colored UsedEdge
Detection technology.

Your challenge

Cutting a wide variety of steel parts
with challenging features and
machining requirements.

Our solution

Reliably handle turning applications
ranging from tough intermittent
cutting to fine surface finishes with
the versatile TP25 grade.

Your challenge

Every new job in a different material
requires a different cutting tool.

Our solution

Achieve secure results in many
operations in steel, stainless steels,
cast irons, easier HRSA's and more
with TP25's flexible grade design.

Product description

The new TP25 grade from Seco Tools offers that level of reliability across the full range of steel turning applications, from roughing with intermittent cuts to finishing with high-quality surfaces.

Offered with a complete range of proven geometries, this versatile grade for steel also offers good performance in stainless steels, cast irons and easier heat-resistant superalloys.

And to make sure you get the most out of every edge, the grade includes chrome-colored Seco Used-Edge Detection technology for easy edge use identification.



Scan the QR code
and find out more
information

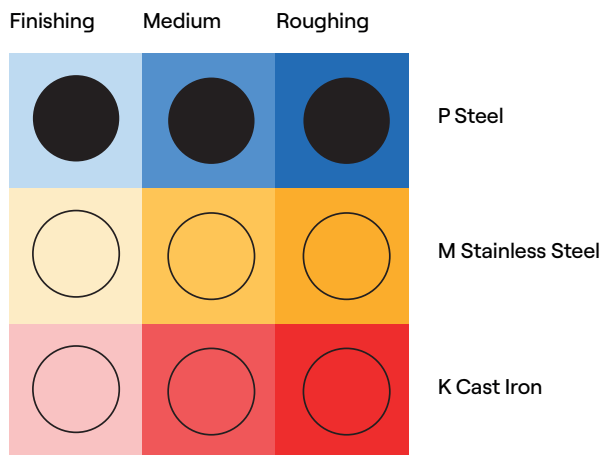


Stop changing out inserts for every job and reduce downtime

Turning Grade TP25

Insert types available

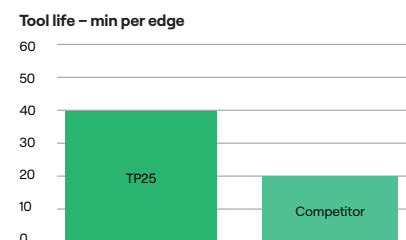
CCGX 06	DNMG 15/19	RCMT 06/08/10/12/16	TPMR 11/16
CCMT 06/09/12/16	DNMU 11	RCMX 20/25/32	VBMT 11/16
CNMG 12/16/19	DNMX 11	SCMT 06/09/12/25/38	WNMG 06/08
CNMM 12/16/19	DPMT 11	SNMG 12/15/19/25	VNMG 16/22
CPMT 06/09	KNUX 16	SNMM 15/19/25	VNMU 13
DCMT 07/11/15	LNMX 19 (2021 release)	TCMT 11/16/22	
DCMX 11	RCMM 12/19	TNMG 16/22/27/33	



Product case studies

Objective	Replacing competitor
Component	57 mm
Material	Low-alloy through-hardening steel SMG P6
Operation	Rough boring dia 32 mm
Coolant	Emulsion
Time in cut per part	0.1 min
Criteria for tool change	Surface finish

	Test TP25	Premium competitor
Tool	DCMT11T308-F1, TP25	DCMT11T308 insert type
Vc	285 m/min	285 m/min
f	0.2 mm/rev	0.2 mm/rev
ap	1.5 mm	1.5 mm
Tool life	40 min	20 min



Scan the QR code and find out more information



Run your stationary application with only one tool

MDT – Multi-Directional Turning and Grooving



Your challenge

Difficulty to achieve the quality surface you're looking for due to process instability.

Our Solution

The unique Secoloc™ clamping system delivers the best stability and safety in addition to high productivity and performance for all your MDT applications.

Your challenge

High inventory required to run all your stationary applications.

Our solution

The unique modular MDT solution Seco provides offers an universal solution suitable for high variety of applications like grooving, profiling, turning, parting-off, threading and even dynamic turning.

Your challenge

Long, stringy chips cause poor surface finishes, scrap workpieces or cause unplanned machine downtime.

Our solution

MDT is available also in combination with Jetstream Tooling®, a high-pressure cooling system. The coolant supply to the cutting edge will help you to create smaller, more easily controlled chips for better surfaces and more secure processes.

Product description

The Seco MDT (Multi-Directional Turning) is universally suitable for variety of applications including grooving, profiling, turning, parting-off, threading and even dynamic turning.

Applications include turning parts with many different diameters, complicated profiles and grooves, replacing the need for several standard and special tools with a single Seco MDT. Further savings can be achieved through fewer tool changes and reduced tool stock.

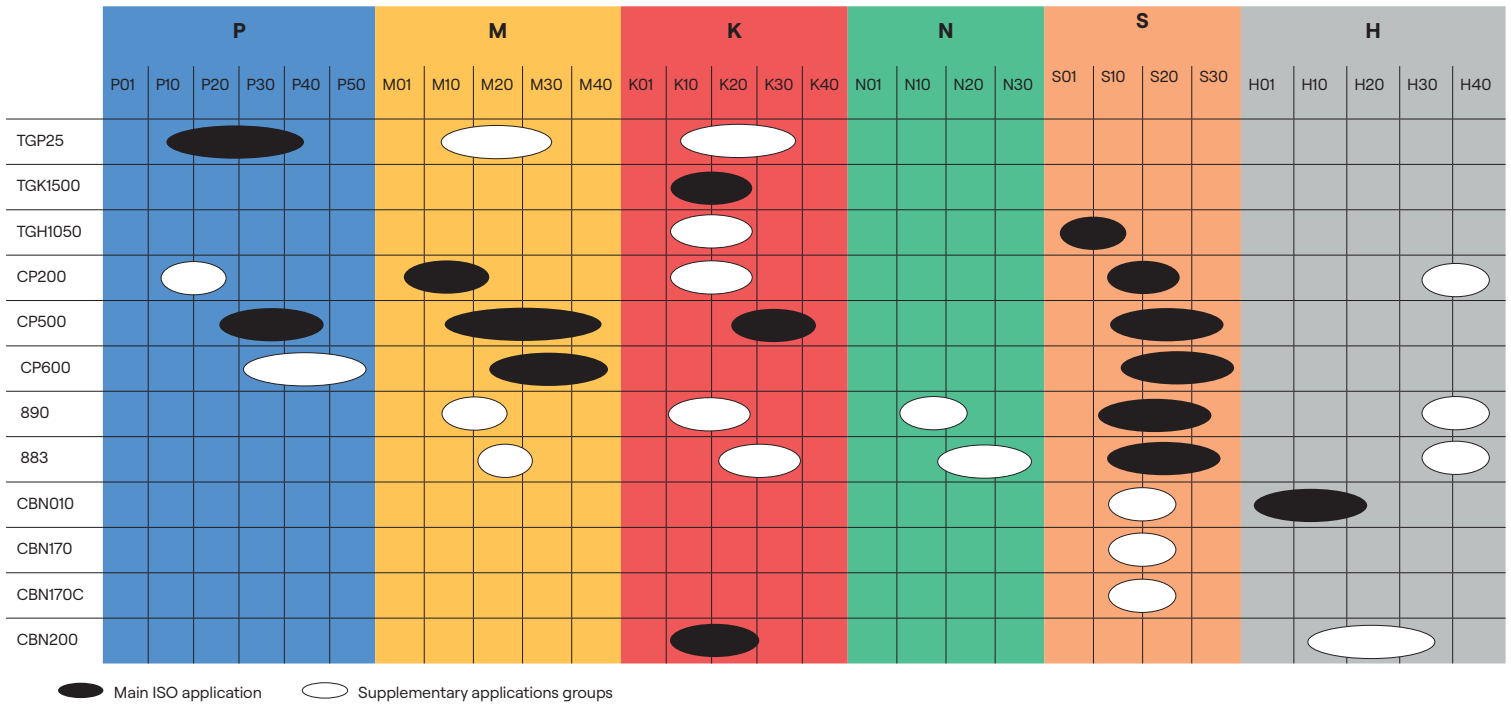


Scan the QR code and find out more information



Run your stationary application with only one tool

MDT - Multi-Directional Turning and Grooving



● Main ISO application ○ Supplementary applications groups

Possible applications

- Turning
- Threading
- Grooving
- Parting-off
- Profiling
- Dynamic turning

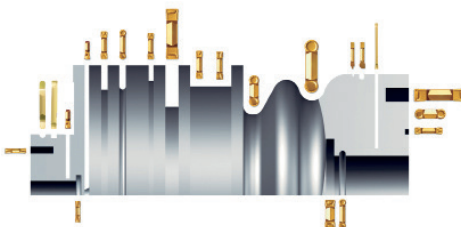
Toolholder type

- Seco Capto (C4 - C5 and C6)
- Square shankholder (section 12 to 32)
- Internal holders (diameter 12mm to 40mm)
- Blade for parting off
- Heads for Steadyliner (anti damping system)

*includes also a range of modular solution

Insert range overview (only main ones)

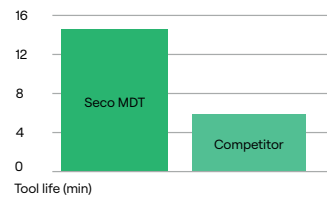
Grade	Purpose
CP500	Universal choice
TGP25	Most resistant grade for steel materials
TGK1500	Best choice for K materials



Product case studies

Material	42 CD 4 - SMG P5
Customer target	Better productivity and secure current process
Type of production	Mass production

	Seco MDT solution	Competitor
Tool	CFML2525P08	
Insert	LCMR3008M0-MP TGP25	
Cutting data	Vc = 130m/min n = 224 rpm f = 0,19mm/rev	Vc = 130m/min n = 224 rpm f = 0,19mm/rev
	Tool life	15 parts vs 5 parts

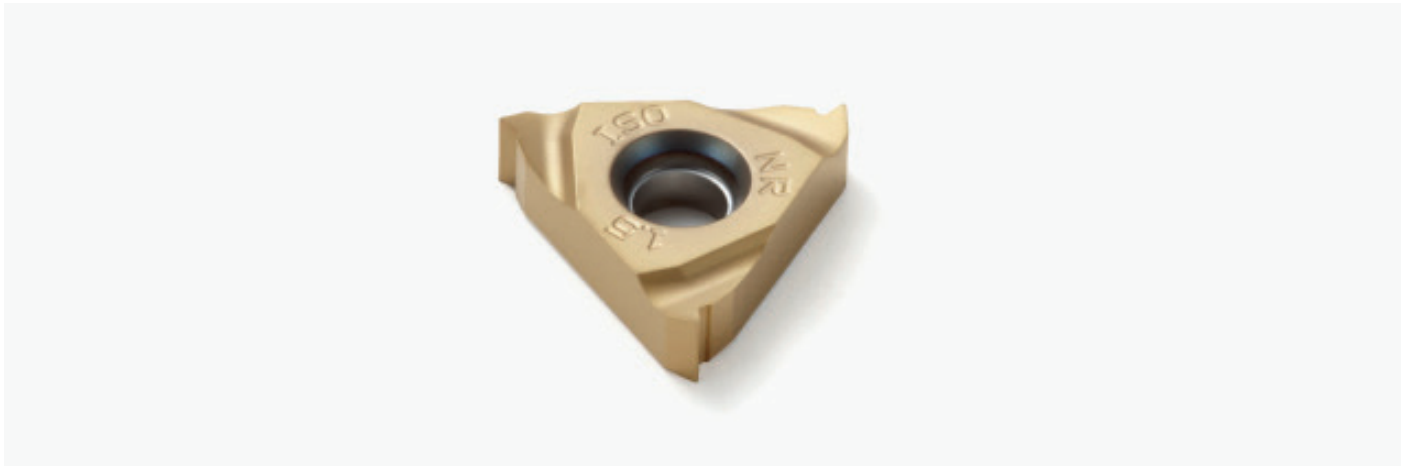


Scan the QR code and find out more information



Your must-have versatile grade for all threading applications

CP500 grade - universal choice for threading applications



Your challenge

Get a versatile and productive grade for all threading applications and materials.

Our solution

CP500 grade features a highly wear resistant PVD coating to provide dependable machining for a large majority of common thread turning applications.

Your challenge

Reduce the risk of inserts moving during threading operations.

Our solution

The innovative toolholders made for use with Snap-Tap® inserts offer the best possible holding power available for long tool life and high accuracy. They employ an Anti-Twist insert locking system that features a carbide pin in the back of the insert pocket that resists wear and prevents the insert from turning or twisting under pressure during machining.



Scan the QR code and find out more information



Your must-have versatile grade for all threading applications

CP500 grade - universal choice for threading applications

Product description

Tough grade with thin grain associate with PVD coating. This combination provides the CP500 a high level of versatility in a wide range of materials for threading operations. This grade is also available for grooving, parting-off and ISO-turning applications.

Available for the Seco range of threading profiles

60 = V profile, 60°
 55 = V profile, 55°
 ISO = ISO, Metric
 UN = Am. UN
 UNJ = Am. Aerospace
 MJ = Metr. Aerospace

W = Whitworth, BSW
 BSPT = Whitworth, Taper
 NPT = Am. NPT
 NPTF = Am. NPTF (Dryseal)
 RD = Round, DIN405
 TR = Trapezoidal, DIN103

ACME = Am. ACME-G
 STACME = Am. Stub-ACME
 API = API
 BUT = Buttress

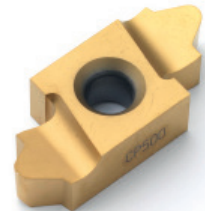
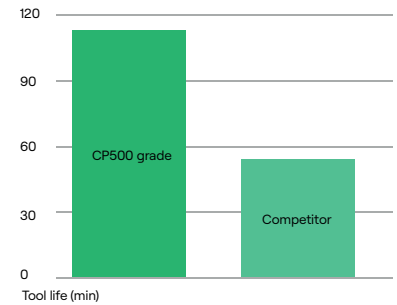
Insert range overview (only main ones)

Suitable materials



Product case studies

Material	DIN 42 CrMo 4 - SMG P5	
Customer target	Reduce tooling costs	
Operation	Threading	
	CP500 grade	Competitor
Insert	16ER2.0ISO-TT CP500	
Cutting datas	Vc = 90m/min n = 550 rpm f = 2 mm/rev	Vc = 90m/min n = 550 rpm f = 2 mm/rev
Tool life	112 parts	56 parts



Scan the QR code and find out more information



Improve your chip
evacuation with a reduced
cost per edge

Perfomax indexable insert drills



Your challenge

Ensure a safe drilling operation for deeper holes.

Our solution

Improved design of the body with wave pattern which allows a great chip evacuation.

Your challenge

Reduce your drilling costs extending tool life of your bodies.

Our solution

Laser-hardened drill body, which reduces wear during chip evacuation and allows for increased tool life.

Your challenge

Reduce your inventory by having a versatile drill that is suitable for any application.

Our solution

Perfomax easily handles crossing holes, angled entrances or exits in addition to the most common drilling applications.

Product designation

Drills:

SD522 for 2xDc

SD523 for 3xDc

SD524 for 4xDc

SD525 for 5xDc

SD542 for 2xDc for bigger diameters

Inserts:

SCGX for periphery insert

SPGX for central insert

Product description

Seco's range of Perfomax™ indexable insert drills features square inserts with four cutting edges, polished drill body high stability, unique chip flute design and inserts with modern grades that use Duratomic® technology.



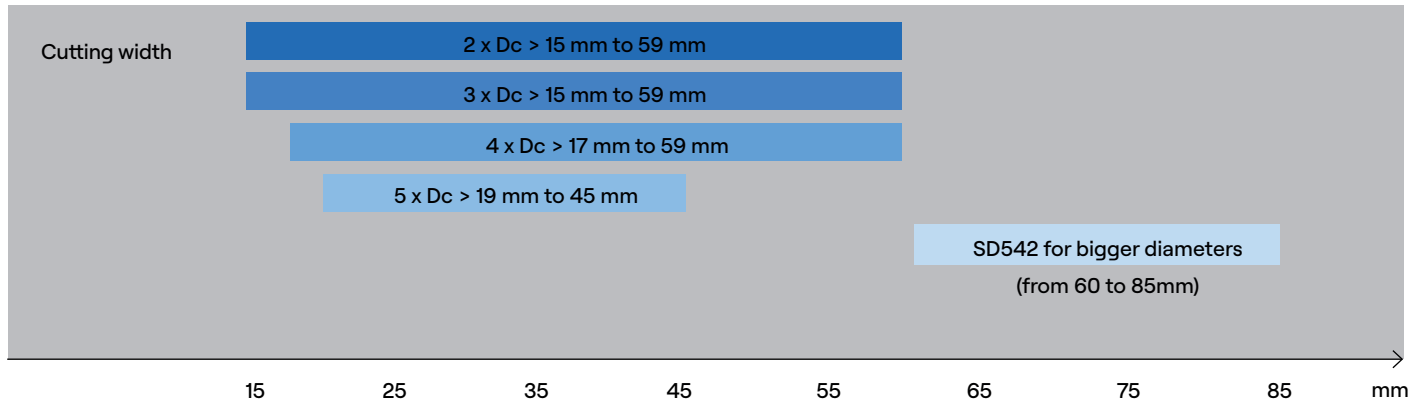
Scan the QR code
and find out more
information



Improve your chip evacuation with a reduced cost per edge

Perfomax indexable insert drills

Ratio length-width



Attachment type:
ISO9766 (R7),
Seco Capto C5,
ABS Compatible (R2).

Insert range overview (only main ones)

Periphery inserts

Grade	Purpose	Suitable materials
DP3000	Universal grade	P M K
DS2050	Specific for M and S material	P M N S
DP2000	Optimized tool life in P and K material	P K
T250D	Specific for H material	P M K H

Central inserts

Grade	Purpose	Suitable materials
T400D	Universal grade	P M K N S H
DP3000	Optimised tool life	P M K
DS4050	Specific for M and S material	P M N S



Product case studies

Objective	Tool life / Productivity
Component	Ring gear
Material	42CrMo4 - SMG P5
Operation	Through hole / blind hole
Coolant	Emulsion 6%
Hole depth	86 mm
Tool change criteria	Flank wear
Machine	Machining centre

	Seco Perfomax	Competitor
Tool Peripheral insert	SD523-27-81-32R7 SCGX070308-P2, DP3000 SPGX0903-C1, T400D	
vc	203 m/min	190 m/min
f	0,13 mm/rev	0,12 mm/rev
vf	315 mm/min	280 mm/min
Tool life	120 pcs (10,3 m)	60 pcs



Scan the QR code and find out more information



Keep your drilling costs low
and versatility high

Universal solid carbide drills



Your challenge

High-mix/low-volume manufacturing typically faces small batches and several different workpiece materials, which require stocking a wide, expensive range of tools.

Our solution

Good drill performance in most workpiece materials thanks to Universal drill geometry with the corresponding cutting data from 3xD up to 12xD.

Your challenge

Short tool life impacts tooling costs and incorrect length-diameter ratio impacts hole quality.

Our solution

The wear resistant TiAlN coating across the entire range secures for tool life and performance.

Product designation

SD1103 for 3xDc
SD1105 for 5x Dc
SD1108 for 8x Dc
SD1112 for 12 x Dc

Product description

Seco Universal solid carbide drills bring versatility and reduced stockholding costs to low and medium batch production. The line features a multipurpose, 4-facet point geometry that provides excellent centering capability, maintains an IT8/9 hole tolerance and is easy to regrind. Seco Universal drills also feature a polished TiAlN coating that offers high abrasion resistance, toughness and good chip evacuation.

The drills feature advanced coating technology and have a universal geometry suitable for most applications across all industry segments that focus on hole quality. They efficiently drill steel, stainless steel, cast iron and more.



Scan the QR code
and find out more
information



Keep your drilling costs low
and versatility high

Universal solid carbide drills

Universal Drills 3xD up to 12xD

Reduce your inventory and the overall cost per hole. The wide mix of materials being machined in small and medium-batch production and modern high-mix/ low-volume manufacturing environments usually require a considerable amount of tools. You will need fewer drills because the Universal solid carbide drills from Seco are designed to cover a wide range of work piece materials, enabling versatile, lean, and cost-effective drilling operations.

Range overview

Usable length ϕ ratio	ϕ mm	Designation	No. of items
3xD, non coolant	3 - 20 mm	SD1103-0300-014-06R1	162
		SD1103-2000-055-20R1	
3xD, coolant through	3 - 20 mm	SD1103A-0300-014-06R1	162
		SD1103A-2000-055-20R1	
5xD, coolant through	3 - 20 mm	SD1105A-0300-023-06R1	209
		SD1105A-2000-077-20R1	
8xD, coolant through	3 - 20 mm	SD1108A-0300-028-06R1	125
		SD1108A-2000-170-20R1	
12xD, coolant through	3 - 20 mm	SD1112A-0300-048-06R1	112
		SD1112A-2000-238-20R1	

Suitable materials



Cutting data example

Material	SD1105A-0800-043-08R1
Cutting data	Vc = 90 m/min. F = 0.15 mm/rev. Material: SS2244, DIN 42CrMo4, AISI 4140 - SMG P5.



Scan the QR code
and find out more
information



Stop changing taps every time you change part material

Seco Threading Taps



Your challenge

High-mix/low production involves various part materials and types that require extensive inventories of thread cutting and forming taps.

Our solution

For versatility and cost savings, the Seco Tools line of thread cutting and forming taps handles a wide range of materials.

Your challenge

Spending too much time selecting the proper tap for the application at hand.

Our solution

The Seco range of thread cutting and forming taps offers various performance levels that encompass versatile and cost.

Your challenge

Chips can cause tool breakage when threading stainless steel and other long chip materials.

Our solution

Seco thread cutting and forming taps efficiently control chips at hole depths up to 3 x diameter.

Product designation

T34 : High performance versatile cutting taps

- T34-R for right-hand helix taps (for blind holes)
- T34-P for spiral point taps (for through holes)

T32 : Versatile cutting taps :

- T32-R for right-hand helix taps (for blind holes)
- T32-P for spiral point taps (for through holes)
- T32-S for straight flutes (for blind and through holes up to 1,5 Dc)

Product description

Seco Taps provide versatile and cost-effective thread cutting taps and forming taps for a wide range of materials and part types. With the combination of superior base materials, advanced coatings and special edge preparations, Seco Taps generate precision threads while they also maximize chip evacuation, shorten setup times and extend tool life.



Scan the QR code and find out more information



Stop changing taps every time you change part material

Seco Threading Taps



T34 New High Performance Versatile Taps

Threads range	M 1 ÷ 36; MF 3x0,35 ÷ 24x1,5 UNC #4-40 ÷ 5/8-11; UNF #4-48 ÷ 5/8-18 G 1/8 ÷ 1 EG (M, UNC, UNF)
Application (Rm UP TO 1200 MPa):	P, M, K, N
Material & coating:	HSSE-PM & TiAlN+WC/C
Type of flutes & chamfers:	Spiral point & chamfer B – through holes / available also with internal radial cooling Helix flutes 45° & chamfer C or E – blind holes / available also with internal axial cooling
Acc. to standards:	DIN 371 DIN 376/374 DIN 5156
Tolerance:	6HX (4H for <M1,4) – for Metric threads 2BX – for UN threads Normal-X – for G threads

T32 New Universal Taps

Threads range	M 1 ÷ 52, MF 8x1 ÷ 30x2 UNC #4-40 ÷ 1 1/2 -6; UNF #12-28 ÷ 1 1/2 -12 G 1/2" – 1"
Application (Rm UP TO 1000 MPa):	P, M, K, N
Material & coating:	HSSE & TiAlN+TiN
Type of flutes & chamfers:	Straight & chamfer C – both types of holes Spiral point & chamfer B – through holes Helix flutes 40° & chamfer C – blind holes
Acc. to standards:	DIN 371 + Extra long version (EL) DIN 376/374 + Extra long version (EL) DIN 5156
Tolerance:	6H (4H for <M1,4), 6G – for M threads 2B – for UN threads Normal – for G threads

Product case studies

Objective	Increased tool life	
Part name	-	
Material	1.1121 – SMG P2	
Operation	Blind hole	
Coolant	Tapping fluid	
Cutting Depth	4mm	
Criteria for tool change	Flank wear/breakage	
Machine type	Tapping machine	
	Seco	Reference tool
Tool	T34-R45H01C03-2X0.4-63R	Competitor
vc	4 m/min	4 m/min
f	-	-
vf	-	-
Tool life	860 holes	130 holes



Scan the QR code and find out more information



Reduce vibration and
increase productivity

Steadyline Vibration damping holders for milling, turning and boring



Your challenge

When using long overhang tools to machine difficult-to-access areas, such as deep cavities or sections of large, complex monolithic workpieces, vibration often becomes an issue.

Our solution

Steadyline® products, which include cost-effective milling holders as well as turning and boring bars, perform typical long overhang operations twice as fast as traditional tools. Plus, these highly productive vibration-damping solutions offer high metal-removal rates, smooth part surface finishes and long tool life – all while reducing machine tool stress.

Your challenge

Staying competitive while keeping high cutting parameters and good surface finish while have long holds, deep cavities to machine, or complex workpieces.

Our solution

These highly productive vibration-damping solutions offer high metal-removal rates, smooth part surface finishes and long tool life – all while reducing machine tool stress.

Product description

Tooling systems equipped with a vibration absorber which is positioned where deflection is highest, at the front of the bar. The absorber damps vibrations as soon as they are transmitted from the cutting tool to the body of the bar.



Scan the QR code
and find out more
information



Reduce vibration and
increase productivity

Steadyline Vibration damping holders for milling, turning and boring

Milling

- Available in shell-mill, spigot 16 to 40, or Combimaster M12 to M20
- Different back-end as HSK, BT, Seco-Capto, SK

Turning

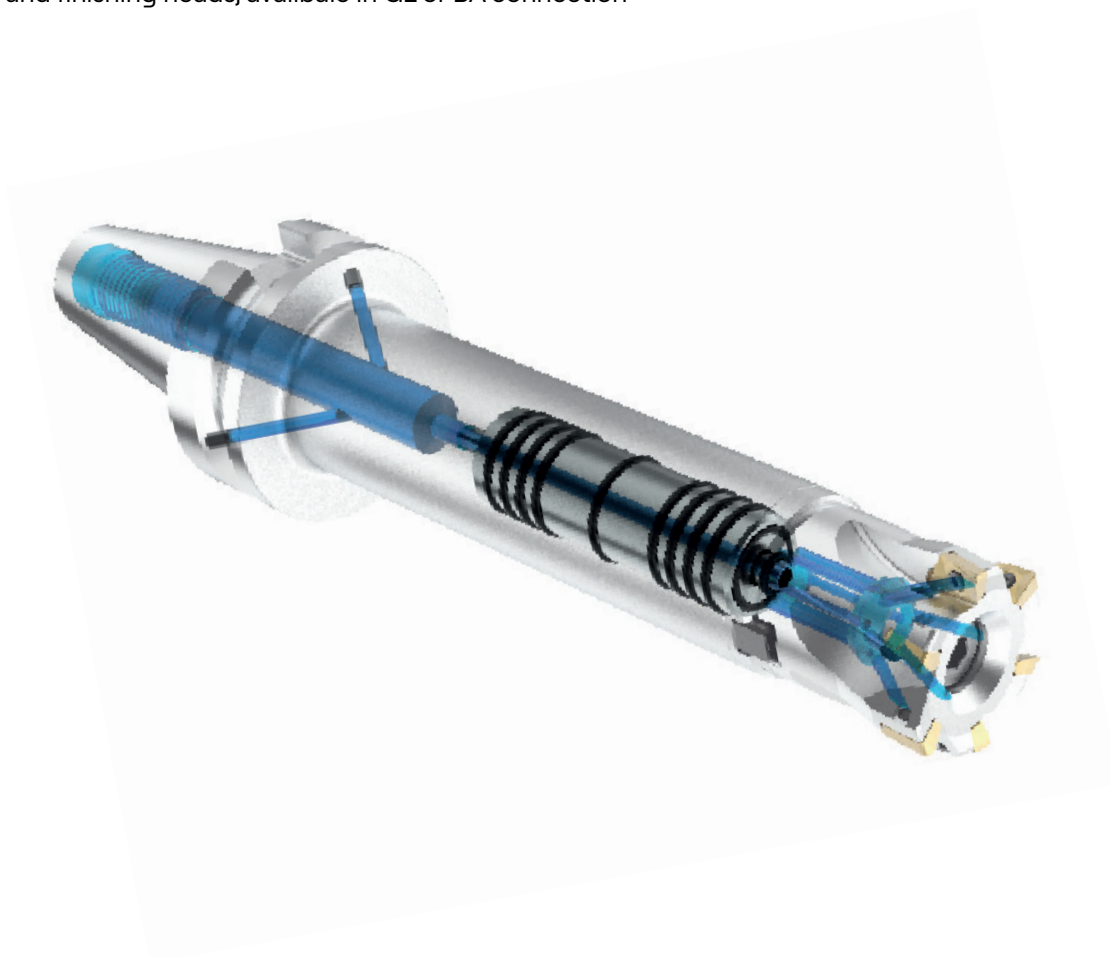
- From diameter 25 to 200 mm in standard, length up to 10xD
- Connection type GL, BA, square shank adapter or Seco-Capto

Boring

- Diameter 26 to 115mm, length up to 640 mm
- Rough and finishing heads, available in GL or BA connection

Possible applications

Milling
Turning
Boring



Scan the QR code
and find out more
information

WWW.SECOTOOLS.COM
© SECO TOOLS AB, 2024.
All rights reserved.



Technical specifications are subject
to change without notice.

